

Orientation for PhD students

prof. Ing. Jaroslav Koton, Ph.D.

Vice-dean for R&D and PhDs studies

September 1, 2025

Doctoral studies

- Represents **the highest level** of university education;
- For those, who are interested in **broadening** their own **knowledge** in a selected area;
- For those, who are **ambitious** to contribute to that area their by innovative attitude and own R&D activities.

Rights and Duties of PhD students

- Study and Examination Rules of BUT
- Rules for organization of studies at the Faculty of electrical engineering and communication, BUT
 - Dean's directive No. 1/2025
- Scientific Identifiers
 - Directive No. 5/2018
 - Unfortunately, still just in Czech (contact your supervisor!)
- Other study regulations and support documents
 - https://www.fekt.vut.cz/en/students/study_regulations

PhD student activities during studies

- Teaching experience
- R&D activities
 - Publications (at least 1 Jimp @ 50+% or dominant authorship)
 - Products
 - Patents
- Study domain
 - Studying courses within the study program at BUT or abroad
- International internship
 - at least 1 month, or active participation in a international R&D project

Individual Study Plan – fast check in IS Apollo

Detail : Přehled hodnocení a kontroly studia

The individual study plan
Annual evaluation
The topic of study
Institute
Tutors
Trainers specialists
Subjects
Pedagogic practice
The Diploma Supplement
Summary of evaluations and

Overall rating:

the total number of points 2

The general point conditions

☐ (26 pts) condition of the minimum boundary for the enrollment to 2nd year of study
☐ (57 pts) condition of the min. boundaries for filing the application for the state PhD exams
☐ (89 pts) condition of the min. boundary for enrollment to 4th year of the study
☐ (113 pts) condition of min. boundary at the deadline of submission of the dissertation thesis in
☐ (123 pts) condition of min. boundary for the dissertation thesis defence and termination of DS

Evaluation of study results

of points for completion of courses 0
the total number of points 0

Point conditions for study results

☐ (8 pts) condition of the minimum boundaries for courses or internship for enrollment to 2nd year of the
☐ (16 pts) condition of the minimum boundary for the courses or an intership and eng. language for the
☐ (22 pts) condition of min. boundary at the deadline of submission of the dissertation thesis in draft

Back
Save

Evaluation of the pedagogic practice:

of points for the pedagogic practice 0

Point conditions for pedagogical practice (36 pts max.)

☐ (8 pts) condition of the minimum boundary for the enrollment to 2nd year of study
☐ (16 pts) condition of the min. boundaries for filing the application for the state PhD
☐ (28 pts) condition of the min. boundary for enrollment to 4th year of the study
☐ condition of a min. boundary of (36 pts) at the deadline for submission of in draft dissertation thesis

Evaluation of the scientific-research activities:

number of points for RD activity 2

Score conditions for research-development activity

☐ (8 pts) condition of the minimum boundary for the enrollment to 2nd year of study
☐ (20 pts) condition of the min. boundaries for filing the application for the state PhD exams
☐ (40 pts) condition of the min. boundary for enrollment to 4th year of the study
☐ (50 pts) condition of min. boundary at the deadline of submission of the dissertation thesis in
☐ (60 pts) condition of min. boundary for the dissertation thesis defence and termination of DS

Display and edit

Individual Study Plan – Annual Evaluation (1/3)

- Report on activity results/update of ISP (in IS Apollo)
- Milestones (MSs):
 - MS 1: Enrolment into 2nd year (by Sept. 1/Feb. 1)
 - MS 2: Enrolment into 3rd year (by Sept. 1/Feb. 1)
 - MS 3: Enrollment into 4th year (by Sept. 1/Feb. 1)
 - MS 4: Submitting semi-finished doctoral thesis (end of 7th term; February)
 - MS 5: Submitting application for doctoral thesis defense

Individual Study Plan – Annual Evaluation (2/3)

- Summary of what „was“ and/or „was not (and why)“ done
- To be approved by your supervisor, dept. head, ..., dean

The screenshot shows a web application interface for the 'Annual evaluation' of an Individual Study Plan. The interface includes a navigation bar with tabs: 'Individual study plan', 'Annual evaluation' (selected), 'The topic of study', 'Institute', 'Tutors', and 'Trainers speci'. Below the navigation bar, there is a dropdown menu for 'academic year' set to '2023/24' and a button 'Copy from the individual plan'. To the right, there are five checkboxes for approval: 'Potvrzeno studentem: Master of Engineering Balaji Kirubakaran, MSc, Eng' (checked), 'Potvrzeno školitelem', 'Potvrzeno vedoucím pracoviště', 'Potvrzeno radou studijního programu', and 'Potvrzeno děkanem'. Below these, there are four tabs for evaluation: 'Implementation of the plan' (selected), 'Study stays and events', 'Creative activity', and 'Overall evaluation of the supervisor'. The 'Implementation of the plan' tab contains the text: 'First year: Literature review about the modern wireless cellular network 5G+ and to analyze an important component such as flying base stations (UAVs) and to study different deployment topology with various challenges in effect'.

Individual Study Plan – Annual Evaluation (3/3)

- Presentation and Discussion with Evaluation Committee
- 2/2 of June
- Evaluation Outline
 - What I did during all my study period so far
 - What I did during the last year
 - Plans for the remaining study period (expecting to finish in 4 years)
 - Plans for the next year in more detail
 - Justification why I did not follow my own study plan, if this is the case

Study domain

Specialized (track-specific) DS course completed with an exam	4
General DS course completed with an exam	2
DS course attended abroad and completed with an expert discussion at FEEC	6
Internship or study abroad (one co. or uni.)/international project participation	5
English course completed with an exam	4
Aims of the doctoral thesis*	4
Semi-finished doctoral thesis**	0 - 4
Recommended minimum after 1st year	8
Recommended minimum after 2nd year (incl. passed internship or study abroad, English course)	16
Recommended minimum when submitting semi-finished thesis	22

* Points for „Doctoral thesis Aims“ are **recorded by FEEC SciDept** (Jana Kasparova) after successfully **passing the State Doctoral Exam** (hold for students, who must pass State Doctoral Exam)

** Points for „Semi-finished doctoral thesis“ are **recorded by the supervisor after submitting Semi-finished doctoral thesis**

Teaching experience

Teaching (one period a week, in-semester)*	2
Supervising semester project or Bachelor's/Master's thesis; per academic year**	4
Teaching materials***	4
Recommended minimum after 1st year	8
Recommended minimum after 2nd year	16
Recommended minimum after 3rd year	28
Recommended minimum when submitting semi-finished doctoral thesis	36

* Within teaching (numerical, computer, and laboratory practicals), not more than 28 points can be granted

** As regards students' projects or theses (semester project, Bachelor's or Master's theses), not more than 8 points are available.

*** Producing at least 20 pages of instructional and teaching materials (classes handbook; participating in the completion of textbooks); designing a laboratory tool; completing a training program.

R&D activities

Original paper in a journal with IF indexed by WoS (Jimp); Patent	30
Original paper in a journal indexed by SCOPUS (Jsc) or ERIH; book	20
Original paper at an international conference (D)	10
Submitting a project proposal to receive a grant	2
Receiving a foreign grant	20
Receiving a Czech Republic grant	5
Applied research and science results (semi-industrial installation and pilot production; validated technology; prototype; applied methodology; functional sample; authorized software; utility model)	5
Recommended minimum after 1st year	8
Recommended minimum after 2nd year	20
Recommended minimum after 3rd year	40
Recommended minimum when submitting semi-finished doctoral thesis	50
Recommended minimum when submitting application for doctoral thesis defense	60

Overall evaluation – recommended limits

MS 1	Total recommended score at the end of the 1st year	26
MS 2	Total recommended score at the end of 2nd year	57
MS 3	Total recommended score at the end of the 3rd year	89
MS 4	Total recommended score when submitting semi-finished doctoral thesis	113
MS 5	Total recommended score when submitting application for doctoral thesis defense	123

Publication - classification

- Journal paper - J
 - **Jimp** - Journal with Impact Factor (IF) resp. Article Influence Score (AIS) – indexed by Web of Science (=Web of Knowledge, WoS)
 - **Jsc** - Journal indexed by SCOPUS
 - **Jost** - other
- Conference proceedings paper - D
 - Paper/Conference is indexed by WoS, SCOPUS, IEEExplore
 - Conference organizer is/is not from Czech Republic

Publication results classification in IS Apollo

(valid for PhD students only)

- Paper in journal with IF/AIS indexed in Web of Science - **Jimp**
 - A102
 - <http://apps.webofknowledge.com/>
- Paper in peer-reviewed journal indexed in SCOPUS or ERIH - **J_{sc}**
 - A103
 - www.scopus.com
 - <http://ieeexplore.ieee.org>

Publication results classification in IS Apollo

(valid for PhD students only)

- Paper in journal approved by Research, Development and Innovation Council of Czech Republic - **Jost**
 - A302
 - May also be in Czech language (irrelevant for EN programmes)
 - <http://www.vyzkum.cz/storage/att/B824F2CAD362169FB3F3287B0C4B6D7A/Seznam%20%C4%8Dasopisu%20pro%20rok%202015.pdf>

Publication results classification in IS Apollo

(valid for PhD students only)

- Other journal papers - **Jost**
 - A108 – Original paper in international, foreign journal
 - A309 – Original paper published in Czech or Slovak journal
- Other publications – **B/C**
 - A101 – Research book written in internationally recognized language
 - A301 – Research book written in Czech

Publication results classification in IS Apollo

(valid for PhD students only)

- Paper in conference proceedings indexed in WoS and/or SCOPUS - **D**
 - A104
- Paper in conference proceedings (international) - **Dost**
 - A105
- Paper in conference proceedings (Czech or Slovak) - **Dost**
 - A304

Other R&D results/activities in IS Apollo

(valid for PhD students only)

- Applied research results
 - A107, A306, A307 - Patents
 - A305 – semi-industrial installation and pilot production; validated technology; prototype; applied methodology; functional sample; authorized software; utility mode
- Projects
 - B301 – submitting project application
 - B108, B109, B213, B214 – Project lead/co-lead of a Czech/Foreign grant (not only project team member)

Possible Journals (not only)

- Journal with IF/AIS (A102)
 - IEEE Access (ISSN 2169-3536)
 - Sensors* (ISSN 1424-8220)
 - AEU - International Journal of Electronics and Communications (ISSN 1434-8411)
 - Symmetry* (ISSN 2073-8994)
 - Applied Science – Basel* (ISSN 2076-3417)
 - Electronics* (ISSN 2079-9292)
 - Optics Express (ISSN 1094-4087)

*MDPI Publisher – try to diversify, where you publish your results (more info from your supervisor)

Possible Journals (not only)

- Journals in SCOPUS (A103)
 - Axioms (ISSN 2075-1680)

**Always discuss suitable Journal/Conference to publish in
with your supervisor!**

Financial support for your R&D papers

- Budget of the project led by your supervisor
- After discussion with your department's head
- Fond Open Access VUT
 - <https://www.vutbr.cz/uk/openaccess/fond>
 - Check eligibility rules, before you submit the manuscript



Duty to create Scientific Identifier


- Author of any R&D results has a **duty** to create ORCID account/identifier („My Card“ in BUT Intraportal); [Directive No. 5/2018](#)
- Creating also ResearcherID and Scopus Author ID is **voluntary but highly recommended**
- Guidelines
 - <https://www.vutbr.cz/en/uk/scientific-publishing/author-identifiers>
 - <https://www.vutbr.cz/en/uk/scientific-publishing/author-identifiers/orcid>
 - <https://www.vutbr.cz/uk/podpora-publicovani/identifikatory/researcherid>
 - <https://www.vutbr.cz/uk/podpora-publicovani/identifikatory/scopus-author-id>

Publish, because...

- Follow recommended limits for regular study cross-checks

Evaluation of the scientific-research activities:

number of points for RD activity

 Display and edit

Score conditions for research-development activity

- ☐ (8 pts) condition of the minimum boundary for the enrollment to 2nd year of study
- ☐ (20 pts) condition of the min. boundaries for filing the application for the state PhD exams
- ☐ (40 pts) condition of the min. boundary for enrollment to 4th year of the study
- ☐ (50 pts) condition of min. boundary at the deadline of submission of the dissertation thesis in
- ☐ (60 pts) condition of min. boundary for the dissertation thesis defence and termination of DS

- Extra scholarship proportional to reached score
- Tool to address future R&D partner
 - Join publications
 - Study internship

„What is my gain?!“

- Satisfaction
- Scholarship and something more, „if I want“
- „Other“
 - Critical thinking and evaluation of own steps
 - Responsibility for own decisions
 - Communication skills, presentation and defense of my ideas
 - Another university diploma

(Guaranteed) Doctoral income – HOT TOPIC

- Determined as $1.2 * \text{minimal salary (MS)}$
 - Netto income
 - DI = 24,960 CZK @2025/2026 (MS 20,800 CZK)
 - DI = 27,360 CZK @2026/2027 (MS 22,800 CZK)
- [Application](#) needed to become eligible = **bureaucracy for all**

At FEEC DI is guaranteed without application

Discuss with Dept. Head

...something more, „if I want“

- Participate in projects (supervisor, department, faculty)
 - GA ČR – Czech Science Foundation
 - MV ČR – Ministry of Interior
 - MPO – Ministry of Industry and Trade
 - TA ČR – Technology Agency of the Czech Republic
 - International projects (Horizon Europe, NSF-USA, COST Action...)
- Participate in cooperation with industry
 - Contract research
 - Results of such research may fall into R&D activities (prototype, software, patent...)

...something more, „if I want“

- PhD Talent 2025
 - Scholarship **120 kCZK/year** for 3 years (paid directly by JCMM)
 - Call deadline: **Sept. 23, 2025** (call open Sept. 4, 2025)
- Junior Inter-faculty project BUT
 - One „year“ (=10 months) student project (max total budget **200 kCZK**)
 - Project call opening: **Dec. 2025 – Jan. 2026**
 - <https://www.vutbr.cz/vav/specificky-vyzkum>
- PhD Talent FEKT 2026
 - Scholarship **75 kCZK** for 2 talented freshmen
 - Call opening: approx. 2/2 **June 2026**
- Fulbright scholarships
 - Calls open during **April 2026**
 - [Kryštof Novotný](#)

Study/research internships

- **Erasmus+ programme**

- Internships within EU
- Financed by EU (study internships approx. 420-520 EUR/month, research internships 600-700 EUR/month, depends on destination)

- **Freemovers**

- Internships mainly outside EU (Argentina, China, South Korea,...)
- Financed from Czech budget (max 30 kCZK/month)

- Support of **International mobility** of BUT students

- BUT Institutional plan (ask your Dept. head)
- Support 30 kCZK/month

- [IAESTE Czech Republic](#)

- DZS – [Czech National Agency for International Education and Research](#)
https://www.fekt.vut.cz/en/students/going_abroad

Dept. of Science and International Relations FEEC

Jana Kašparová

Doctoral study agenda



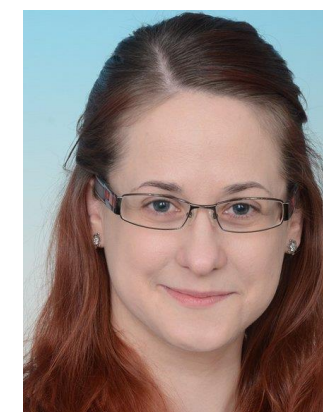
Mgr. Marta Průdková

International mobilities



Mgr. Michaela Macečková

R&D results



Office hours

Mo: 9:00-11:00; We: 9:00-11:00, 13:00-15:00; Th: 9:00-11:00, 13:00-14:00

Write an e-mail before your visit

https://www.fekt.vut.cz/en/faculty/structures/dek_vo

More People Good-to-Know at FEEC

prof. Vladimír Aubrecht

Faculty Dean



Dr. Stanislav Klusáček

Vice-dean for
Internationalization

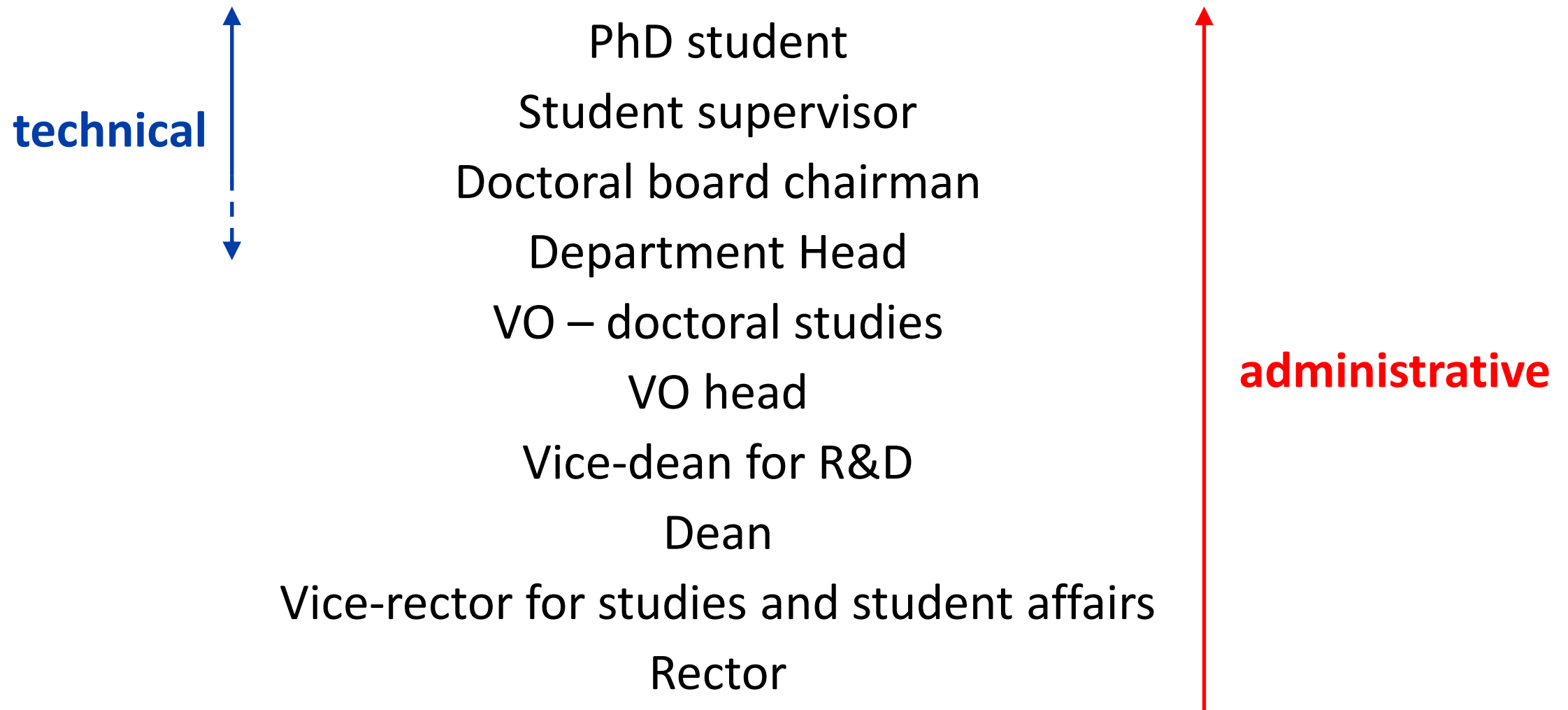


Ing. Jiří Dvořáček

Students' Chamber
of the Faculty
Senate Chairman

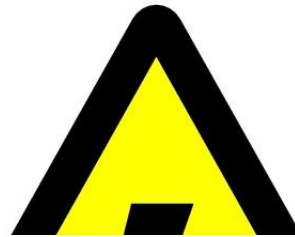


If there is an issue...

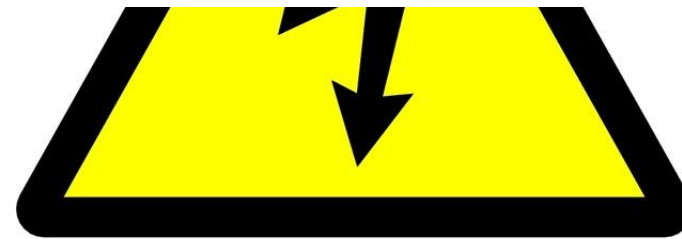


...expect the most misunderstandings between...

You



!!Communicate!!



Your supervisor

Supervisor's codex

- Guarantees PhD student's professional development
- Provides regular personal consultations
- Supervises PhD student's continuing education, including the development of pedagogical competencies
- Helps the student to establish professional contacts and integration into the professional community
- Helps the student to manage internship
- Helps the student to present reached R&D results
- Makes the student aware of code of ethics for researchers

Students' codex

- Fulfills responsibly and on time obligations and follow planned study schedule
- Communicates actively with the supervisor, informs about progress, obstacles and difficulties
- Aims for creativity and originality in research work
- Publishes original research results, maintains research documentation
- Takes an interest in own professional and expect development
- Is part of the community of the workplace

What to do now?

- In cooperation with supervisor prepare and finalize Individual Study Plan in IS Apollo
 - Planned study activities
 - Teaching
 - R&D activities
 - Internship (1 month minimum)
- Check/update bank account information in your „profile“
- Create sci. identifier(s) ORCID, ResearcherID, Scopus Author ID
- **Be seen!!**

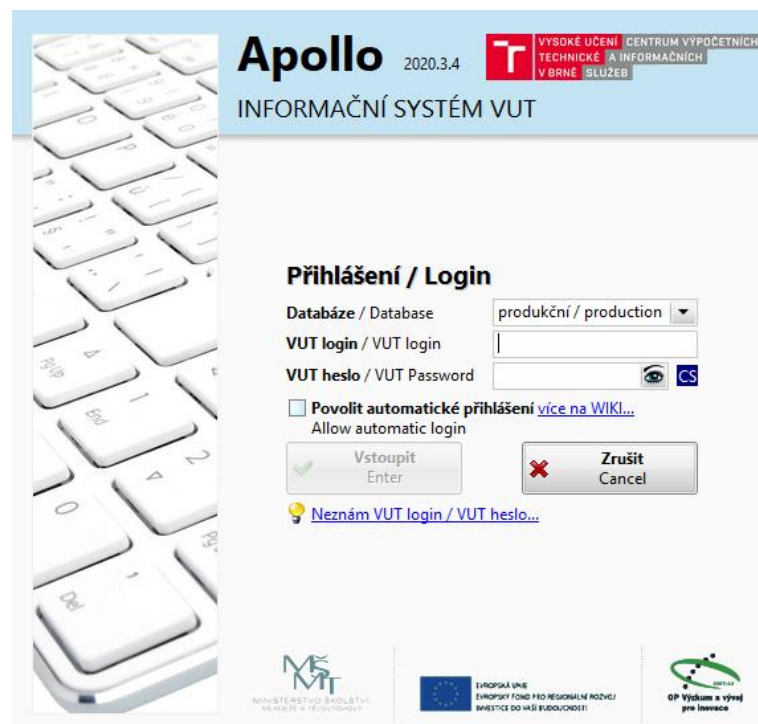
Study schedule example

(aka I can make it)

Study year	Milestone	Study Area	Points	Points (cum.)	Teaching experience	Points	Points (cum.)	R&D activities	Points	Points (cum.)	Poits total (cum.)	Min points req. (cum.)
1/W		Technical course 1	4	4	PC/num/labs (4 hour/week)	8	8					
		General course 1	2	6								
1/S		Technical course 2	4	10	PC/num/labs (4 hour/week)	8	16	Conf. paper (co-author - 20%)	2	2		
		General course 2	2	12				Conf. paper (main author - 60%)	6	8		
	MS 1	(min limit is 8)		12	(min limit is 8)		16	(min limit is 8)		8	36	26
2/W		Technical course 3	4	16	PC/num/labs (4 hour/week)	8	24	Project proposal (main investigator)	2	10		
								Indexed journal paper (co-author - 20%)	6	16		
2/S		English (DxX-JA6 or DxX-QJA)	4	20	PC/num/labs (2 hour/week)	4	28	Conf paper (main author - 60%)	6	22		
					Supervisor of 2 bc/mgr theses (4 p./	8	36					
	MS 2	(min limit is 16)		20	(min limit is 16)		36	(min limit is 20)		22	78	57
		PhD proposal/aims	4	24								
3/W		Internship	5	29				Indexed journal paper (co-author - 30%)	9	31		
3/S								Indexed journal paper (main author - 50	15	46		
	MS 3	(min limit not defined)		29	(min limit is 28)		36	(min limit is 40)		46	111	89
4/W		Semi-finished thesis (0 to 4 p.)	4	33				Conf paper (main author - 60%)	6	52		
	MS 4	(min limit is 22)		33	(min limit is 36)		36	(min limit is 50)		52	121	113
4/S								Indexed journal paper (main author - 50	15	67		
	MS 5	(min limit not defined)		33	(min limit not defined)		36	(min limit is 60)		67	136	123

IS Apollo – fast intro

- Installation - <https://www.vut.cz/is>

The screenshot shows the login interface of the Apollo information system. The header includes the 'Apollo' logo, version '2020.3.4', and a red 'T' logo with text 'VYSOKÉ UČENÍ | CENTRUM VÝPOČETNÍCH | TECHNICKÉ A INFORMAČNÍCH | V BRNĚ | SLUŽEB'. Below this is 'INFORMAČNÍ SYSTÉM VUT'. The main section is titled 'Přihlášení / Login'. It contains a 'Databáze / Database' dropdown menu set to 'produkční / production', a 'VUT login / VUT login' text input field, and a 'VUT heslo / VUT Password' password input field with an eye icon and a 'CS' language selector. There is a checkbox for 'Povolit automatické přihlášení více na WIKI...' (Allow automatic login) and a link 'více na WIKI...'. At the bottom of the login section are two buttons: 'Vstoupit / Enter' (with a green checkmark icon) and 'Zrušit / Cancel' (with a red X icon). Below these buttons is a link 'Neznám VUT login / VUT heslo...'. The footer features logos for 'MŠMT' (Ministry of Education, Youth and Sports), the 'EVROPSKÁ UNIE' (European Union) logo with text 'EVROPSKÝ FOND PRO REGIONÁLNÍ ROZVOJ' and 'INVESTICE DO VAŠÍ BUDOUCNOSTI', and a logo for 'OP Výzkum a vývoj pro inovace'.

- To switch to EN: after login: Soubor → Language: English

IS Apollo: Studies → Ph.D. studies

- Individual Study Plan

Detail: : Individuální studijní plán

The individual study plan Annual evaluation The topic of study Institute Tutors Trainers specialists Subjects Pedag

academic year 2020/21

pass SDZ till

end of st.

☐ approved by the student

☐ approved by the tutor

Save

Delete

Time schedule Scientific-research activity Pedagogic activities Study visit in abroad Participation at events Study visit in the Czech Republic

1 2 3 4 5 6

Based on discussion/recommendations of supervisor here is the plan „what“, „when“, „how“ I will do expecting I will finish my studies within regular study period

Desktop PhD stud... 0h 29m CS

IS Apollo: Studies → Ph.D. studies

1 • Individual study plan → Time schedule

- 1st year
 - Literature survey, first results to publish,...,following study duties,...
 - Submitting a review based on my own survey
- 2nd year
 - Proposal of the student's own solutions and approaches, their validation by simulations/experiments, evaluation and publication of results, method optimizations,..., following study duties,..., communication with university XX, XY XZ to plan internship,...
 - Submitting a conference/journal paper dealing with...
- 3rd year
 - Further optimization, proposal of new methods/algorithms,..., publication of results,..., critical comparison of „my“ and „their“ solutions, running the internship at XX, XY or XZ,...
 - Submitting J_{imp} paper with my authorship of more than 50%,...
- 4th year
 - Continue in further development of proposed methods, submitting submitting semi-finished doctoral thesis,..., publication of results, finalization of dissertation thesis and its defense

IS Apollo: Studies → Ph.D. studies

- ② • Individual study plan → Scientific – research activities
 - List of planned activities in current academic year
 - Study/development/analysis/optimization of methods based on..., preparing papers for publication in journals XX, XY, XZ...
- ③ • Individual study plan → Pedagogic activities
 - List of planned activities in current academic year (if relevant)
 - Lecturing laboratory/numerical/PC exercises of courses...
- ④ • Individual study plan → Study visit in abroad
 - List of planned activities in current academic year
 - Get in contact with colleagues from universities XX, XY, XZ... and dealing possible dates of my internship...
 - Internship at XY university/R&D organization
- ⑤ • Individual study plan → Participation at events
 - List of planned activities in current academic year
 - Active participation at XX, XY, XZ conferences/events...
- ⑥ • Individual study plan → Study visit in the Czech Republic
 - List of planned activities in current academic year

IS Apollo: Studies → Ph.D. studies

7

• Subjects → Add

- Valid courses are those abbreviated as DPC/DKC-xxx or DPA/DKA-xxx
- English language DPX/DKX-JA6

Current subjects

Select subjects: ☒ jen obor ☐ all current faculties ☐ all current BUT academic year 2021/22

+	fakulta	zkratka	otevren	název	číslo roč.	kredity	ukončení	semestr	povinn
▶	FEKT	DPC-AM1	<input checked="" type="checkbox"/>	Vybrané kapitoly řídicí techniky	1	4	drzk	Z	PV
	FEKT	DPC-AM2	<input checked="" type="checkbox"/>	Vybrané kapitoly měřicí techniky	1	4	drzk	L	PV
	FEKT	DPC-EE1	<input checked="" type="checkbox"/>	Matematické modelování v elektroenergetice	1	4	drzk	Z	PV
	FEKT	DPC-EE2	<input checked="" type="checkbox"/>	Nové trendy a technologie výroby energie	1	4	drzk	L	PV
	FEKT	DPC-ET1	<input checked="" type="checkbox"/>	Elektrotechnické materiály, materiálové sousta	1	4	drzk	Z	PV
	FEKT	DPC-ET2	<input checked="" type="checkbox"/>	Vybrané diagnostické metody, spolehlivost, jak	1	4	drzk	L	PV
	FEKT	DPC-FY1	<input checked="" type="checkbox"/>	Rozhraní a nanostruktury	1	4	drzk	Z	PV
	FEKT	DPC-FY2	<input checked="" type="checkbox"/>	Spektroskopické metody pro nedestruktivní dia	1	4	drzk	L	PV
	FEKT	DPC-MA1	<input checked="" type="checkbox"/>	Statistika, stochastické procesy, operační výzku	1	4	drzk	Z	PV
	FEKT	DPC-MA2	<input checked="" type="checkbox"/>	Diskrétní procesy v elektrotechnice	1	4	drzk	L	PV
	FEKT	DPC-ME2	<input checked="" type="checkbox"/>	Mikroelektronické technologie	1	4	drzk	L	PV

ř:1, v:0/27

OK Cancel

!!Courses that you select become compulsory!!

IS Apollo: Studies → Ph.D. studies

- 8 • Individual study plan
 - Approved by student
 - Approved by supervisor/tutor
 - Approved by the dept. head
 - Approved by scientific board – **by Oct. 15**
 - Approved by dean

- ☐ Správnost a úplnost potvrzena **studentem**
- ☐ Správnost a úplnost potvrzena **školitelem**
- ☐ Odsouhlaseno **vedoucím pracoviště**
- ☐ Odsouhlaseno **oborovou radou**
- ☐ Schváleno **děkanem**

- **!Check inside Dept.** (and program Sci. Board) about the „Approved by student“ deadline
- „Approved by dean“ will be handled by Faculty SciDept.

The ISP is printed only twice during your studies!!

- for State Doctoral Exam
- for Dissertation thesis defense

Courses to Select

- Technical courses (4 points each)
 - Each dept. offers two courses, the most close to your study field
 - [English for post-graduates](#) (Dxx-JA6)
- General courses (2 points each)
 - [Scientific publishing A to Z](#) (Dxx-EIZ)
 - [Quotations in a research work](#) (Dxx-CVP)
 - [Solving of innovative tasks](#) (Dxx-RIZ)
- Selected course becomes **compulsory**. If not passed you must
 - Apply this course next year and must pass!
 - Justify not passing the course and propose another (Annual Evaluation)

Courses to Select

- Other Technical/General courses
 - Passed during your training schools/internships
 - [University PhD School](#) (by BUT CVP), Sept. 19-Dec. 12
 - [Course on the basics of scientific work](#) (by AV ČR), Oct. 6-9, Nov. 24-27

[Applied!](#) From research to business (by JIC)

To better become part of our community (TB²PC)

- Welcome presentations at your department
- PhD Talent FEKT 2025 – October 8
 - Presentations of 2nd year PhD students
- Open Science Day – November 6
 - What do we do, if we don't teach
- Evaluation of R&D in the Czech Republic (and the World)
 - Scheduled for November
- Publishing of R&D results
 - Scheduled for December

Good luck in your study and R&D efforts!